



**ELECTRIC VEHICLE CHARGER  
EVC16 SPICA L SERIES**

User Manual



# CONTENTS

1 - SAFETY INFORMATION .....	2
1.1 - SAFETY WARNINGS .....	2
1.2 - FIRE FIGHTING INSTRUCTIONS FOR ELECTRIC VEHICLE CHARGING STATION .....	4
1.3 - GROUND CONNECTION WARNINGS .....	4
1.4 - POWER CABLES, PLUGS, AND CHARGING CABLE WARNINGS .....	4
1.5 - PROTECTIONS REQUIRED BEFORE SYSTEM.....	5
2 - GENERAL SPECIFICATION .....	6
3 - TECHNICAL SPECIFICATION.....	7
4 - USER INTERFACE & AUTHENTICATION.....	8
5 - CONNECTIVITY .....	8
6 - MECHANICAL SPECIFICATIONS .....	8
7 - ENVIRONMENTAL SPECIFICATIONS.....	9
8 - BEHAVIOR OF STATUS INFORMATION LED .....	9
9 - GENERAL INFORMATION.....	10
9.1 - INTRODUCTION OF THE PRODUCT COMPONENTS.....	10
10 - CHARGING SCENARIOS (INCLUDING ALL SCENARIOS).....	10
10.1 - DC CCS OUTLET .....	11
10.1.1. - VEHICLE CONNECTION AND CHARGING .....	11
10.1.2 - STOP CHARGING.....	13
10.1.3 - CHARGING COMPLETED .....	13
10.2 - EMERGENCY BUTTON (OPTIONAL) .....	14
11 - PRODUCTS WITH CERTIFIED ENERGY METER (OPTIONAL) .....	15
12 - DOOR SWITCH .....	16
13 - TILT SENSOR .....	16
14 - ERROR AND MALFUNCTION CONDITIONS .....	17
14.1 - ERROR CONDITIONS .....	17
15 - CLEANING AND MAINTENANCE .....	18
16 - DC DEVICE PERIODIC MAINTENANCE LIST.....	18
17 - WIRELESS LAN TRANSMITTER SPECIFICATIONS .....	20

## 1 - SAFETY INFORMATION



### CAUTION THE RISK OF ELECTRIC SHOCK



**CAUTION:** THE ELECTRIC VEHICLE CHARGER CAN ONLY BE INSTALLED BY A LICENSED OR EXPERIENCED ELECTRICIAN BY THE ELECTRICAL REGULATIONS AND STANDARDS OF ANY RELATED REGION OR COUNTRY.



### CAUTION

The AC grid connection and the electric vehicle charger's load plan are examined and approved by the electrical regulations and standards of the related region or country determined by the authorities.



In the installation of multiple electric vehicle chargers, the load plan will be determined accordingly. The manufacturer shall not be liable in any way, directly or indirectly, for damages or risks caused by the errors that may occur due to AC grid connection or load planning.

### CAUTION: FOR DEVICES WITHOUT EMERGENCY BUTTON;

If any suspicious or emergency situation arises at the charging station aside from normal operation, start by halting the charging process through the vehicle (using the appropriate switch or button, which may vary depending on the model), and then disconnect the socket. As an alternative option, consider switching off the MCB or RCCB in the panel where the product is energized by the installer.

**IMPORTANT - Read these instructions fully before installation or operation.**

### 1.1 - SAFETY WARNINGS

- Keep this manual in a safe place. These safety and operating instructions should be kept in a safe place for future reference.
- Check the voltage specified on the rating plate and do not use the charging station without the proper mains voltage.
- Do not continue to use the unit if you have any doubts as to whether it is working normally. If the device has been damaged in any way, switch off the main supply circuit breakers (MCBB and RCCB) in the upstream distribution board. Consult your local dealer.
- During charging, the ambient temperature range (without direct sunlight) should be between  $-35^{\circ}\text{C}$  and  $+55^{\circ}\text{C}$  and the relative humidity should be between 5% and 95%. Use the charging station only within the specified operating parameters.
- The device location should be consciously selected in order to prevent the charging station from overheating. High temperature caused by direct sunlight or heating sources during use may cause the charging current to decrease or the charging process to be temporarily interrupted.
- The charging station is made for indoors and outdoors. It can also be used in public open spaces.

- To reduce the risk of fire, electric shock, or product damage, do not expose the unit to heavy rain, snow, lightning storms or other harsh weather conditions. Furthermore, liquids should not be spilled or splashed on the charging station.
- Do not touch the end terminals of the charging station, the electric vehicle connector and other dangerous current parts with sharp metal objects.
- Avoid exposing the unit to heat sources and place it away from flammable, explosive, hard or caustic materials, chemicals or steam.
- Explosion Risk. This equipment contains internal spark or spark-generating parts and must not be exposed to flammable vapours. It should not be placed in lowered or below ground level locations.
- Make sure that the specified Current Switch and RCD are connected to the building mains to prevent the risk of explosion and electric shock.
- The base part of the charging station should be at (or above) ground level.
- Adapters or converter adapters cannot be used. Cable extension sets cannot be used.
- Use this product at an altitude of not more than 2000 meters above sea level.
- Do not place objects containing liquids, such as glasses and bottles, on the product.
- Against the risk of choking, keep the plastic packaging materials out of the reach of babies, small children and pets.
- Do not wash the device with water.
- Do not use abrasive fabrics, wet cloths, alcohol or detergents. Microfiber fabric is recommended.
- Keep the door lock key, which enables the product panel to be opened and prevents access to electrical parts, out of the reach of small children.
- It should be kept in its original box to prevent damage to device components during transport.
- Defects and damages that occur during transportation after the device shipment to the customer are not covered by the warranty.
- The allowed current value of the service socket is a maximum of 10A.
- Please adhere to the rope warnings outlined in the “Basic Alignment and Layout” section, especially when transporting the product.



**WARNING :** Persons (including children) who are physically, perceptually or mentally incompetent or inexperienced should not use electrical devices without the supervision of a person responsible for their safety.



**CAUTION:** This vehicle charger is designed only for charging the electric vehicles that do not require ventilation during charging.

## 1.2 - FIRE FIGHTING INSTRUCTIONS FOR ELECTRIC VEHICLE CHARGING STATION

- **Personal Safety:** If you observe a fire or notice any danger signs, prioritize your safety above all else. Do not take unnecessary risks.
- **Notify Emergency Services Immediately:** Contact your local emergency services. Dial the emergency number 998 or 112.
- **Stopping the Charging Process:** If it is safe, disconnect the charging cable from the vehicle and the charging station.
- **Use of Fire Extinguishing Agents:** If a fire extinguisher or other firefighting equipment is nearby and you are trained to use it, attempt to extinguish the fire. However, never risk your own safety.
- **Avoid Direct Contact with Fire:** Do not try to extinguish a fire unless you have the appropriate equipment, training, or knowledge, or if the fire is exceptionally large or dangerous.
- **Move Away from the Station:** If the fire cannot be controlled or is intensifying, evacuate from the charging station while maintaining a safe distance.
- **Avoid Inhaling Smoke:** Try to avoid breathing in smoke. If possible, cover your nose and mouth with a damp cloth or clothing.
- **Warn Others in the Area:** Alert others nearby about the fire hazard and urge them to evacuate the area.
- **Wait for Emergency Services:** After safely evacuating the area, wait for emergency services to arrive in a secure location.
- **Do Not Return to Station Facilities:** Do not re-enter the charging station building until emergency services have concluded their operations.
- **Reporting the Incident:** Contact customer support to report the incident.

Remember, safety is always the top priority. In the event of a fire, always seek guidance from local emergency services and adhere to their instructions.

## 1.3 - GROUND CONNECTION WARNINGS

- The charging station should be connected to a central grounding system. The grounding conductor entering into the charging station should be connected to the equipment grounding lug inside the charging station. This should be powered by the circuit conductors and connected to the equipment grounding rod or to the guide member at the charging station. Connections to the charging station are in the charge of the installers and purchasers.
- Connect it only to correctly grounded plugs to reduce the risk of electric shock.
- **WARNING :** Make sure that the charging station is permanently and properly grounded during installation and use.

## 1.4 - POWER CABLES, PLUGS, AND CHARGING CABLE WARNINGS

- Note that the plugs and sockets in the charging station are compatible.
- A damaged charging cable may cause a fire or electrical shock conditions. Do not use this product if the Flexible Charging cable or vehicle cable is worn, has frayed insulation, or shows any different signs of damage.
- Make sure the charging cable is well placed, thus you will not step on and trip over the cable or the cable will not damage or subject to stress.

- Do not forcibly pull on the charging cable or damage the cable with sharp objects.
- Never touch the electric cable/plug or vehicle cable with wet hands as this may cause a short circuit or electric shock.
- To avoid the risk of fire or electric shock, do not use this device with an extension cable. In case of damage to the mains cable or vehicle cable, the cables should be replaced by the manufacturer, service agency or similar qualified persons to prevent any hazards.
- Use appropriate protection while connecting the device to the main power distribution cable.

## 1.5 - REQUIRED UPSTREAM PROTECTIONS

- Class-I/B Lightning Protection must be connected to the upstream distribution panel. Min. cable length between the charger and the protection device recommended to be 10m. \*The charger contains Class II/C Type Surge Protector Device (SPD).
- MCCB (Thermal Magnetic Circuit Breaker) must be connected to the upstream distribution board.
- Residual Current Device (Toroid) must be connected to the upstream cabinet.
- A single-pole 20 A MCB must be installed on the Neutral line in the upstream supply cabinet.

Model	Power	Input Voltage	Maximum Input AC current	Recommended Minimum Neutral Conductor Cross-Section (Cu)
EVC16-DC160CC	160kW	400V (nom.)	247A	16mm <sup>2</sup>
		360V (-%10)	274A	

- Cable cross-sections must be selected by the installer in accordance with local and international standards, considering the specified maximum AC input current values, minimum allowed input voltage values, installation distances, and mounting location conditions.
- The PE cable cross-section should be at least half of the phase cable cross-section.
- It is recommended to use a CAT6 SFTP Ethernet cable.
- Cables must be suitable for outdoor use.
- Cables must be UV-protected and suitable for installation in underground conduits in compliance with local regulations.
- The AC input cable glands supplied with the product are suitable for cables with diameters in the range of 22–32 mm.

## 2 - GENERAL SPECIFICATION

<b>Model Name</b>	<p><b><u>EVC16-DC Series (Name Coding: EVC16-DC****)</u></b></p> <p>1st Asterisk (*) : Rated Power 160 : 160 kW DC Power Output</p> <p>2nd Asterisk (*) : DC output combination 1 C : CCS Output</p> <p>3rd Asterisk (*) : DC output combination 2 C : CCS Output</p> <p>4th Asterisk (*) : MID Meter Option Blank : No DC Meter MID : MID meter -EICH : Eichrecht Meter</p>
<b>Cabinet</b>	EVC16-DC160

### 3 - TECHNICAL SPECIFICATION

<b>Model</b>		EVC16-DC Series
<b>IEC Protection class</b>		Class - I
<b>IEC EMC Class</b>		IEC 61000-6-3 Class B - Residential (Emission) IEC 61000-6-2 Industrial (Immunity)
<b>Input Rated Voltage and Current Value</b>	<b>Input Rate</b>	230/400 Vac $\pm$ 10% , 50/60 Hz, 250A
	<b>Connection</b>	3L+N+PE (TN-S, TN-C-S or TT)
	<b>Power Factor</b>	> 0.98
	<b>Efficiency</b>	> %95
	<b>Residual Current Protection</b>	230Vac RCBO 1P+N, Type A, 30mA (system)
	<b>Standby Power Consumption</b>	< 80 W
<b>CCS Output - 1</b>	<b>Max. Power</b>	160kW • 1 x 160kW • 2 x 80kW
	<b>Voltage Range</b>	200 – 920V DC
	<b>Maximum Current</b>	500 A • 1 x 160kW 250 A • 2 x 80kW
	<b>Interface Compatibility</b>	IEC62196-1 / 3 IEC 61851-1 / 23 / 24 ISO 15118-1 / 2 / 3 DIN 70121
<b>CCS Output - 2</b>	<b>Max. Power</b>	160kW • 1 x 160kW • 2 x 80kW
	<b>Voltage Range</b>	200 – 920V DC
	<b>Maximum Current</b>	500 A • 1 x 160kW 250 A • 2 x 80kW
	<b>Interface Compatibility</b>	IEC62196-1 / 3 IEC 61851-1 / 23 / 24 ISO 15118-1 / 2 / 3 DIN 70121

## 4 - USER INTERFACE & AUTHENTICATION

<b>Display</b>	7" Color TFT LCD without Touch Screen (16:9)
<b>User Interface</b>	Illuminated buttons
<b>RFID Reader Module</b>	ISO/IEC 14443A/B and ISO/IEC15693
<b>Payment module (Optional)</b>	Contactless Credit Card kit options
<b>Cable Management</b>	N/A
<b>DC Meter (Optional)</b>	MID meter Certified
<b>Eichrecht Approval (Optional)</b>	Eichrecht conformity for Germany
<b>Plug &amp; Charge</b>	ISO15118

## 5 - CONNECTIVITY

<b>LAN Connectivity</b>	Ethernet
<b>WLAN Connectivity</b>	802.11 a/b/g/n/ac
<b>Mobile Connectivity</b>	GSM 900/1800 UMTS 900/2100 LTE Band 1/3/7/8/20/28A
<b>OCPP Specification</b>	OCPP 1.6 J

## 6 - MECHANICAL SPECIFICATIONS







<b>Materiel</b>	Metal Panel	
<b>Protection Degree</b>	Ingress Protection Impact Protection	IP54 IK10
<b>Cooling</b>	Forced Air Cooling Fan	
<b>Cable Length</b>	CCS: 3,5 m CCS: 4,5 m (option)	
<b>Dimensions (Product)</b>	1500 mm (Height) x 650 mm (Width) x 560 mm (Depth)	
<b>Dimensions (Packed version)</b>	1750 mm (Height) 970 mm (Width) 600 mm (Depth)	
<b>Weight (Product)</b>	Net: 220 kg.	
<b>Packed Weight</b>	With Packing : 253 kg	

## 7 - ENVIRONMENTAL SPECIFICATIONS

<b>Operating Condition</b>	Temperature	-35 °C to + 55 °C (Derating is applied over +40 °C to +55 °C) For products with credit card option-20 °C to + 55 °C
	Humidity	5% to 95% (Relative humidity, non-condensing)
	Altitude	0 - 2,000m

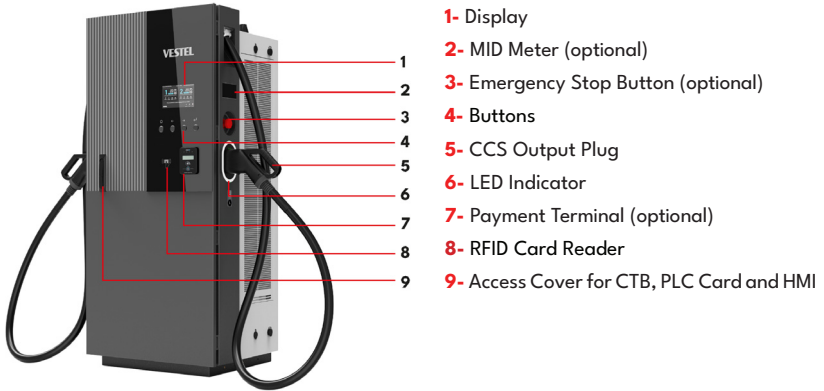
After the product is energized at low temperatures, it should wait for the heater in the charger to activate, and charging should be done after this process.

## 8 - BEHAVIOR OF STATUS INFORMATION LED

STATUS OF LED		MODE
	Blue and Green Flashes	Initialise EVSE.
	No LED Indicator	Rechargeable.
	Blue Illuminates	Charging.
	Blue Illuminates Steadily	Charging is suspended or finished.
	Red Illuminates Steadily	Error.
	Green Illuminates	Charging process is verified.

## 9 - GENERAL INFORMATION

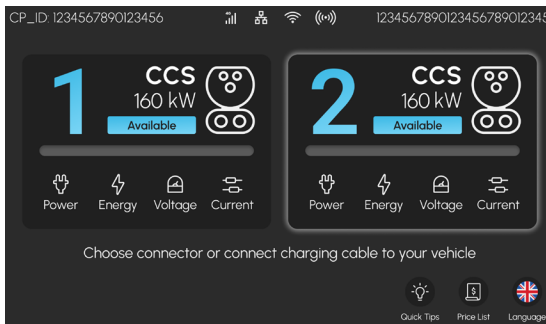
### 9.1 - INTRODUCTION OF THE PRODUCT COMPONENTS



*All products images are given for representative purpose only.*

## 10 - CHARGING SCENARIOS (INCLUDING ALL SCENARIOS)

Connect the charging cable to the socket plug/pull out the charging plug from the socket plug. On the main screen located on the charging station screen, you can press the button you want to use or only connect the plug to your vehicle.

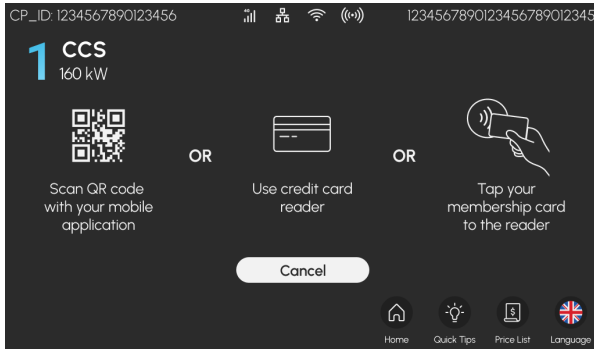


## 10.1 - DC CCS OUTLET

### 10.1.1. - VEHICLE CONNECTION AND CHARGING

- 1-** Scan your RFID card, QR Code to start charging or the use credit card reader.

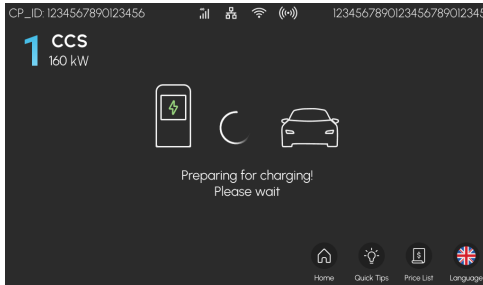
Credit card reader (optional) appears on the screen when there is a payment module. (AutoCharge If it is set in webconfig and vehicle registration is available in the system, charging starts without reading the RFID card).



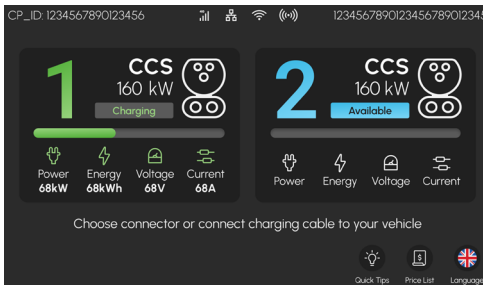
- 2-** Connect the charging cable to the vehicle to start charging.



- 3- It may take a few seconds for the charging session to start. The charging status can be viewed on the charging page.

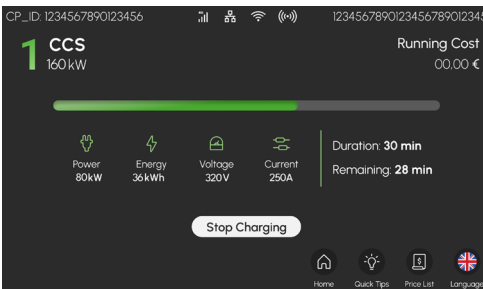


- 4- While charging, the charging status can be viewed in the main menu.



## 10.1.2 - STOP CHARGING

- 1- Press the “Stop Charging” button on the screen to stop charging.

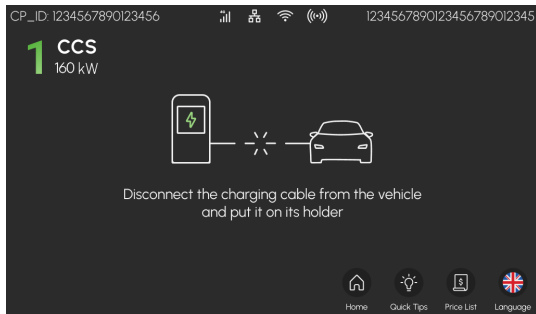


## 2- Scan your RFID card or the QR Code to stop charging.



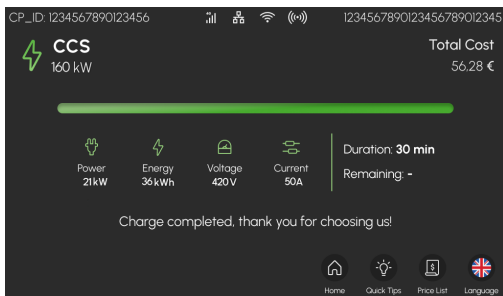
## 3- Disconnect the charging cable.

After disconnecting, you will be automatically switched to the main screen.



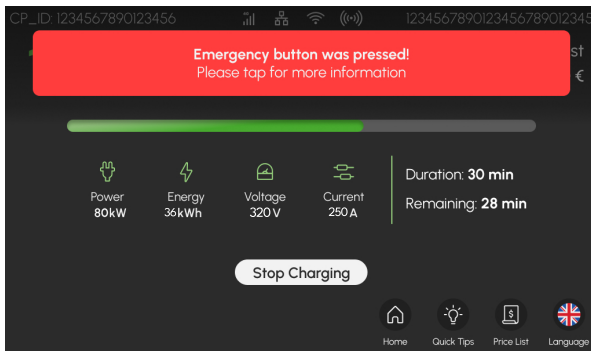
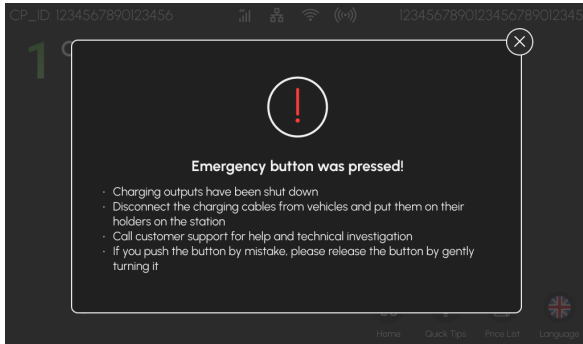
### 10.1.3 - CHARGING COMPLETED

The charging process is successfully completed.



## 10.2 - EMERGENCY BUTTON (OPTIONAL)

Please follow the screen when the emergency stop is pressed.

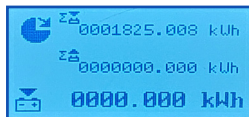


***All products images are given for representative purpose only.***

## 11 - PRODUCTS WITH CERTIFIED ENERGY METER (OPTIONAL)

RFID/Autocharge and credit card (optional) authentication methods have different information on the meter display energy register at the beginning of the transaction.

RFID/Autocharge

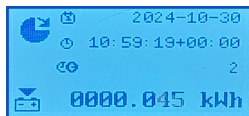


Credit card

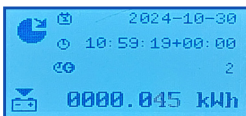


Date and time on site at the beginning of the transaction Total duration of the transaction

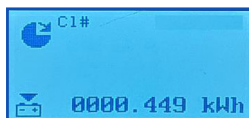
RFID/Autocharge



Credit card

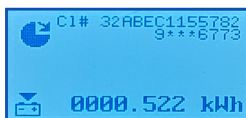


Customer RFID/Autocharge ID



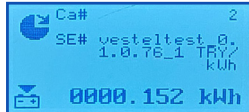
Customer credit card ID

Prefix of the charging station operator, followed by the first 6 digits and the last 4 digits of the credit card ID

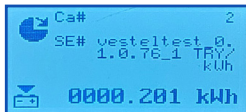


Cable compensation, EVSE identification input and charging point ID\_Sw-Version\_Tariff (chargepointid\_Sw version\_tariff) with currency

RFID/Autocharge

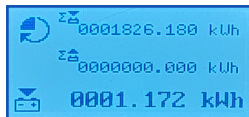


Credit card

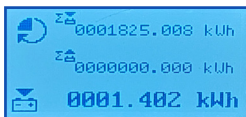


Energy register at the end of the transaction.

RFID/Autocharge



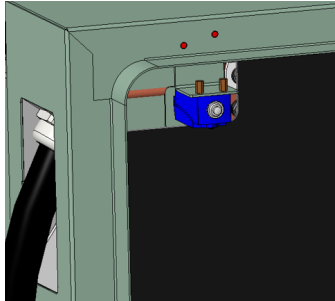
Credit card



*All products images are given for representative purpose only.*

## 12 - DOOR SWITCH

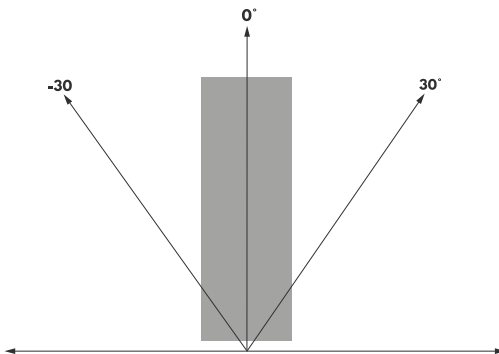
The behavior of the door position can be monitored with 2 different conditions set as normally open or normally closed given via the terminal. When the doors are opened, the breaker can be controlled from the main panel outside the station with a control lead to be taken over the dry contact, and the product enters an out of order state. This information is also transmitted to the service via OCPP.



## 13 - TILT SENSOR

If the product reaches the determined tilt angle in forward or reverse direction, the tilt sensor takes the tilt angle information on the OCPP and disables the sockets and prints "Out Of Order" on the screen. But it does not cut the product energy. In this case, the product must be de-energised by the charging station operator from the energy panel to which it is connected.

**Note:** The tilt angle is 30 degrees by default, but this value can be changed via the WEB UI link.



## 14 - ERROR AND MALFUNCTION CONDITIONS

There are two types of errors or malfunctions:

- **Common Errors:** This malfunction or error affects all four outputs.
- **Charge Output Errors:** Only one socket or plug is affected by this malfunction or error condition.

### 14.1 - ERROR CONDITIONS

Problem	Possible Causes	Recommended Solutions
Power Outage	There is a power outage or the mains voltage is not within the specified range.	Check that the input current switches are activated and that the input voltage range and rotation are as specified in the installation manual.
The CCS output is unavailable	RCBO activated	Check the cable insulation first. Switch the RCBO on. (See. "CIRCUIT BREAKER LOCATIONS FOR CHARGING OUTPUTS" section). Check that the station is functional.
All outputs are unavailable	General error	Please check if there is a power outage. Then check the upstream distribution box current switch. If the outputs are still unavailable, please contact the authorized service.
Fan Failure	Fan malfunctioning.	Check the fans. Remove or clean any elements that may prevent fan blades from spinning.

## 15 - CLEANING AND MAINTENANCE

### DANGER

- Do not clean your electric vehicle charger while charging your vehicle.
- Do not wash the device with water.
- Do not use abrasive cloths and detergents. A microfiber cloth is recommended.

## 16 - DC DEVICE PERIODIC MAINTENANCE LIST

	Maintenance Period (year)									
	1	2	3	4	5	6	7	8	9	10
Air filters	R	R	R	R	R	R	R	R	R	R
Plugs	I	I	I	I	I	I	I	I	I	I
Display	C	C	C	C	C	C	C	C	C	C
Distribution elements (RCBO)	T	T	T	T	T	T	T	T	T	T
AC input terminals	T	T	T	T	T	T	T	T	T	T
DC relay terminals	T	T	T	T	T	T	T	T	T	T
DC output cable and terminals	T	T	T	T	T	T	T	T	T	T
Fan	I	I	I	I	I	I	I	I	I	I
Body	C	C	C	C	C	C	C	C	C	C
Grounding resistance	M	M	M	M	M	M	M	M	M	M

C : Clean

I : Inspect (check, approve, clean, tighten or replace if necessary)

M: Measure

T : Tighten

R : Review

### Air filters

Air filters should be replaced every year when going for maintenance.

### Plugs

All spark plugs should be checked when going for maintenance. If the plug is broken or cracked, it should be replaced. Furthermore, a charging test should be performed with all Plugs.

### Display

During maintenance, the screen should be checked using the physical buttons, as the screen is non-touch. All functions can be controlled through these buttons. If there is no issue with the button operations, the screen should be cleaned.

**Distribution elements (RCBO)**

Distribution elements (RCBO) should be checked and tightened when going for maintenance. These elements can be tightened with a screwdriver with a torque of 2 Nm.

**AC input terminals**

The AC input terminals should be checked and tightened when going for maintenance. These terminals should be tightened with a torque of 8 Nm for metric 8 bolts and 10 Nm for metric 10 bolts.

**DC relay terminals**

DC relay ends should be checked when going for maintenance. Tightening process should be performed with 6.5 Nm.

**DC output cable and terminals**

DC output cable and terminals should be checked when going for maintenance. They should be checked for any damage.

**Fan**

Fans should be checked when going for maintenance. In case of any breakage or damage, the damaged fan must be replaced. If there is no problem with the fans, a charging attempt should be made. It should be checked whether the fans rotate during this charging.

**Body**

The outer cabinet should be cleaned when going for maintenance.

**Grounding resistance**

A mechanism for measuring with a megger should be installed when going for maintenance. After the piles are driven, the voltage between the two piles should be less than 1V.

**In cases where product transportation is required**

During lifting, it is necessary to use 2 ropes of min 540mm (in case of using a single rope of L min=1080mm, the rope must be fixed from the middle lifting part).

During lifting, there should be a minimum angle of 60 degrees at both rope ends as shown in the image. Using a shorter sling will cause damage to the product.

## 17 - WIRELESS LAN TRANSMITTER SPECIFICATIONS

Frequency Ranges	Max Output Power
2400 - 2483,5 MHz (CH1 - CH13)	< 100 mW
5150 - 5250 MHz (CH36 - CH48)	< 200 mW (*)
5250 - 5350 MHz (CH52 - CH64)	< 200 mW (*)
5470 - 5725 MHz (CH100 - CH140)	< 200 mW (*)

(\*) '< 100 mW' for the Ukraine

### Country Restrictions

This Wireless LAN equipment is intended for home and office use in all EU countries, the UK and Northern Ireland (and other countries following the relevant EU and/or UK directive). The 5.15 – 5.35 GHz band is restrictions indoor operations only in all EU countries, the UK and Northern Ireland (and other countries following the relevant EU and/or UK directive). Public use is subject to general authorisation by the respective service provider.

Country	Restriction
Russian Federation	Indoor use only
Israel	5 GHz band only for 5180 MHz-5320 MHz range

The requirements for any country may change at any time. It's recommended that user checks with local authorities for the current status of their national regulations for both 2.4 GHz and 5 GHz wireless LANs.

Hereby, Vestel Mobilite SAN. VE TİC. A.Ş., declares that the radio equipment type EVC is in compliance with Directive 2014/53/EU and Radio Equipment Regulations 2017. The full text of the EU declaration of conformity is available at the following address: [doc.vosshub.com](http://doc.vosshub.com).

# VESTEL

## MOBILITY

**VESTEL MOBİLİTE SANAYİ VE TİCARET A.Ş. EGE SERBEST BÖLGE ŞUBESİ**

Zafer SB Mah. Ayfer Sok. No:22 İç Kapı No:1 Gaziemir, İzmir/ TÜRKİYE

Telefon (pbx) : 90 (232) 251 72 90 Fax : 90 (232) 251 73 13

Gaziemir V.D. : 837 001 0241

